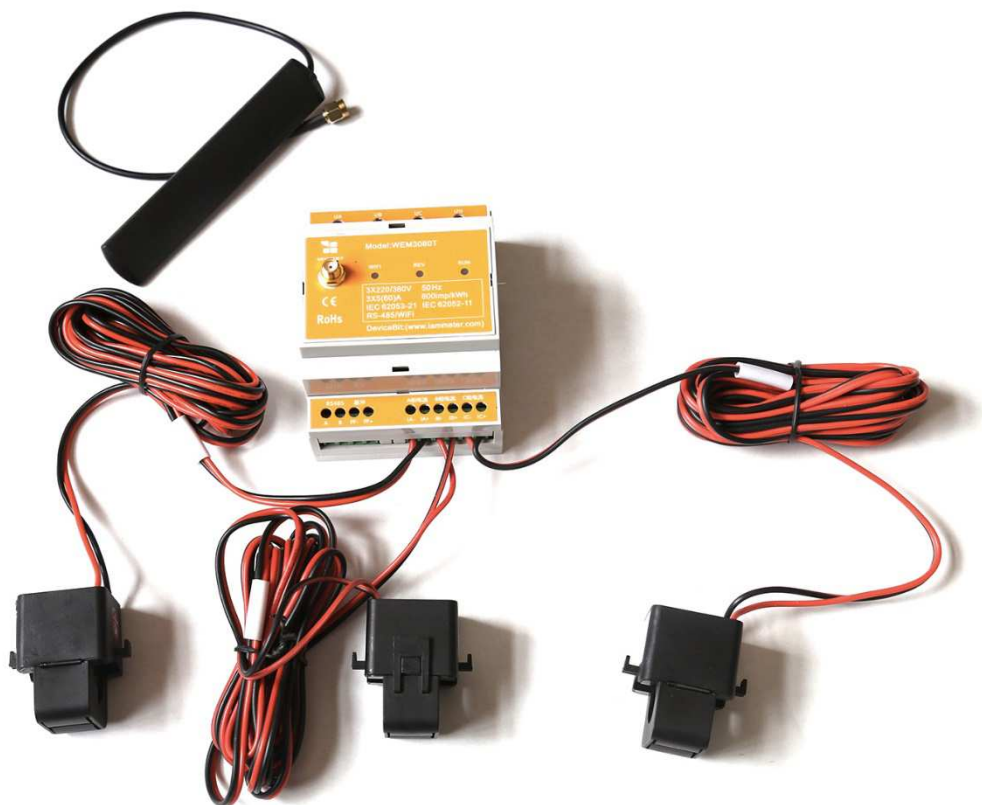




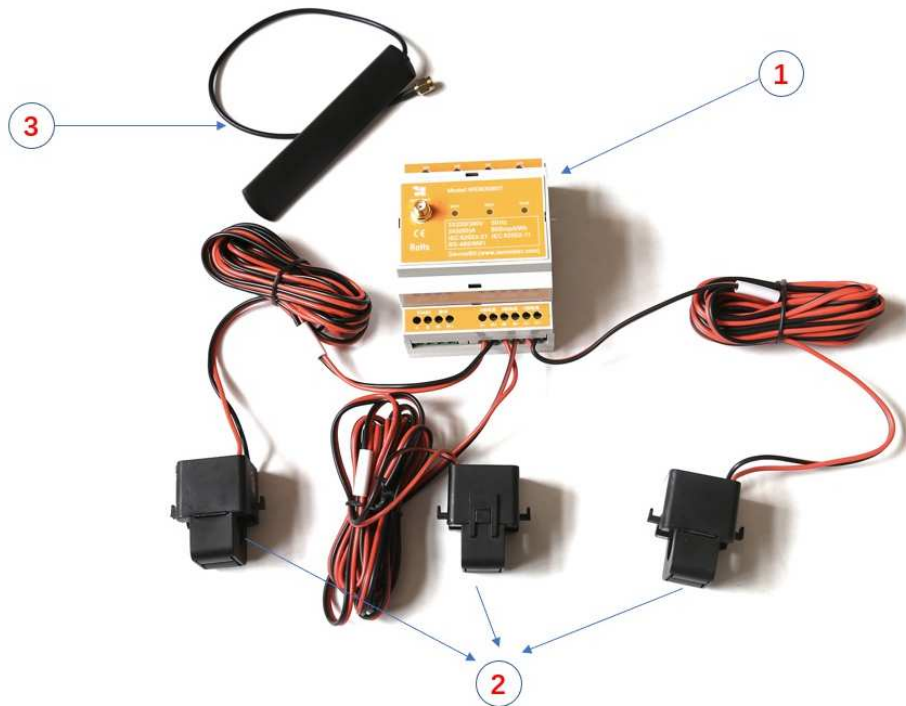
User Manual

Wi-Fi Energy Meter (WEM3080)



OCT, 2017

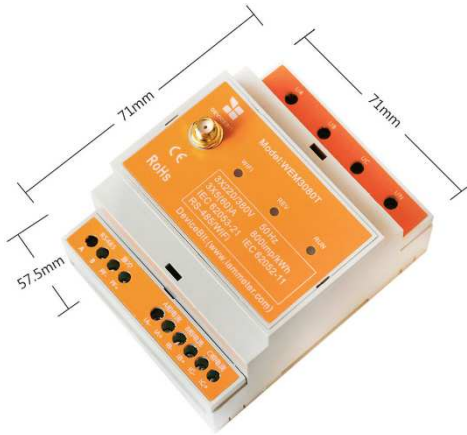
1. Hardware Introduction



Standard Inclusion:

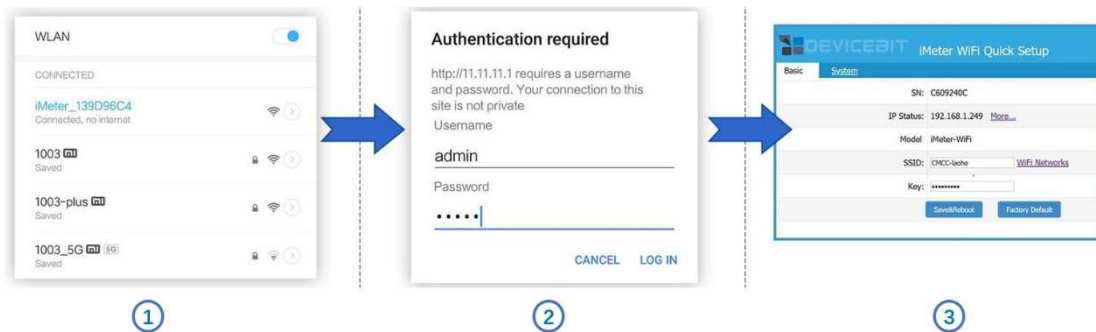
No.	Item	Qty	Remark
1	Wi-Fi Energy Meter	1	Wi-Fi module embedded
2	Split-Core CT (Current Transformer)	1	150A, other CT ratings are optional
3	2.4G Antenna	1	

Dimension of Wi-Fi Energy Meter



Dimension(mm):71mmx90.2mmx57.5mm

2. WiFi Setup



Step1, Use your smart device's Wi-Fi connection setup, connect to the iMeter's network, which will show up as iMeter_xxxxxxx (xxxxxxx is unique device SN). No password required.

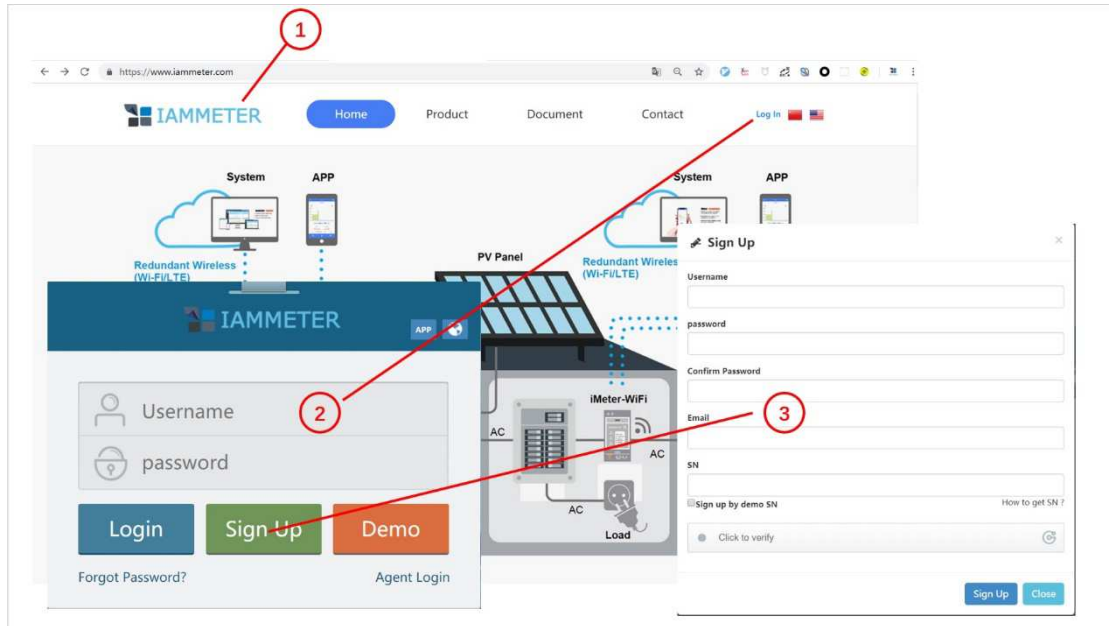
Step2, Whilst connected to the iMeter's network, open a web browser and navigate to <http://11.11.11.1>; Enter the username "admin" and password "admin".

Step3, Connect to home router by clicking "WiFi Networks" or manually input home router's SSID (your home Wi-Fi networks' SSID) and Key (your home Wi-Fi networks' password) and then click "Save&Reboot"

Note: After your device connected to your home router, the monitor's Wi-Fi network is disappeared for security reason. You can find the Wi-Fi monitor in your PC's network under same WiFi network, which will be shown up as iMeter_xxxxxxx too.

3. Monitor on DeviceBit Cloud

3.1 Sign up



Step1, Visit the dedicated web portal for temperature and humidity monitoring: <https://www.iammeter.com>, click "Log in", and the login page is shown

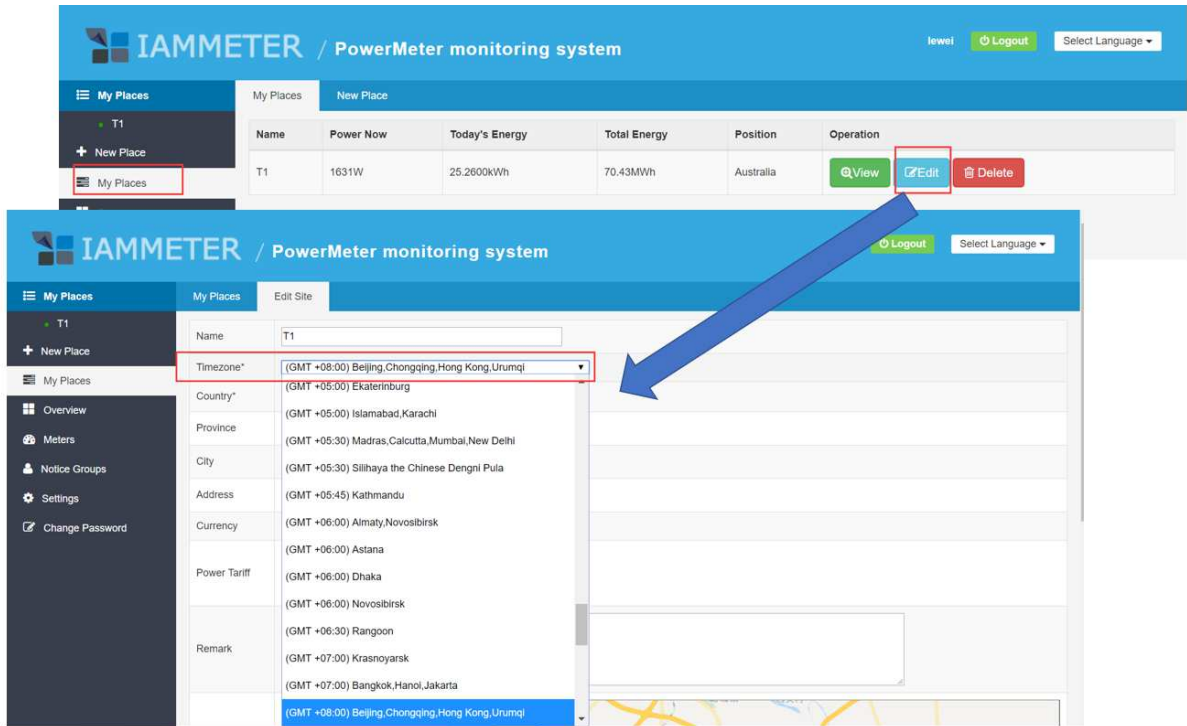
Step2, Click "Sign up", fill up the information on sign up page, enter the iMeter SN.

SN: Serial Number is unique ID of your iMeter, it is a combination of 8 digits or letters. The WiFi network of Monitor shows up as "iMeter_xxxxxxx" and "xxxxxxx" is the SN.

3.2 Set the time zone

Log into Iammeter, you can see the meter is already added in the system, click "My place" on the left menu bar and then click "Edit" button on tab page to set your location and time zone.

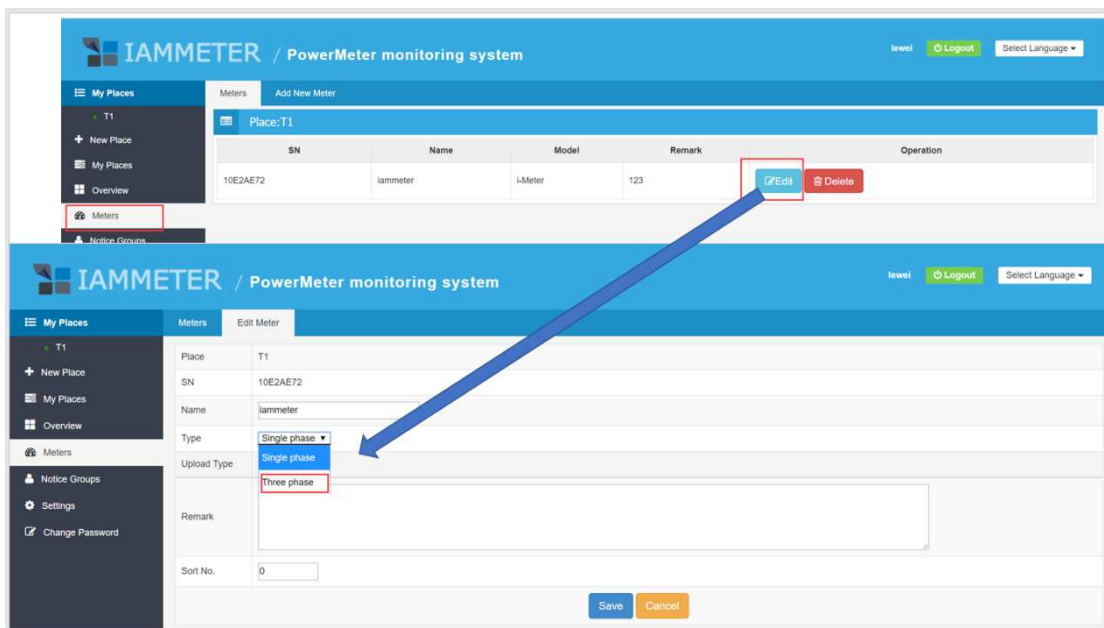
Note: Time zone must be correctly selected, or it will affect the data statistics on time basis.



3.3 Configure the meter

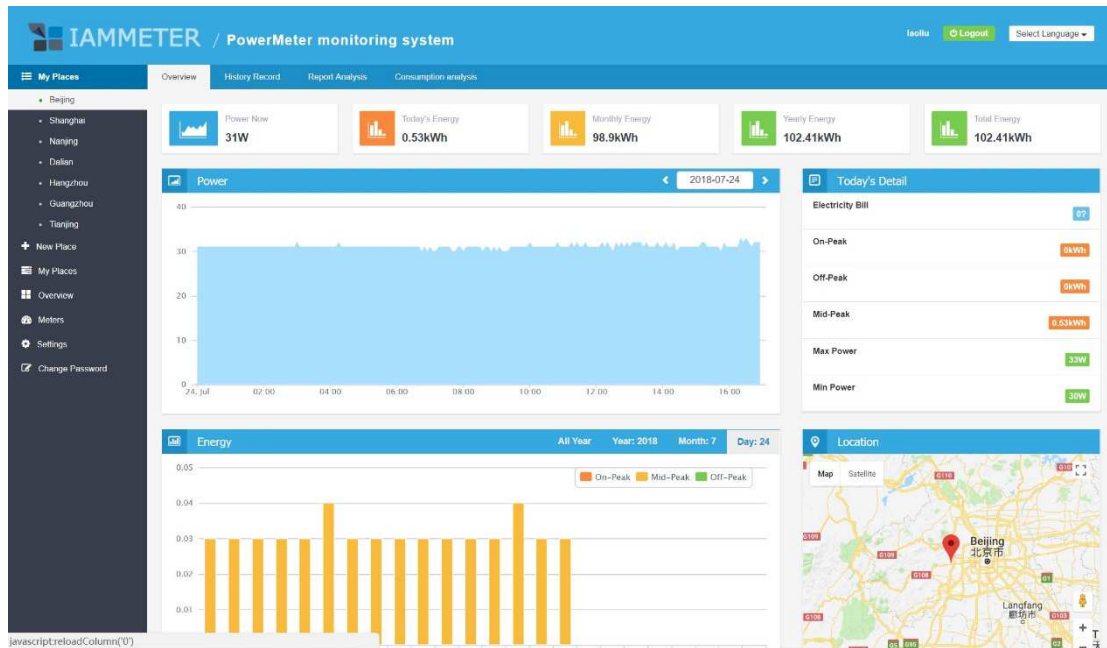
The meter is already created in the system after registration, but the meter type is “Single Phase” by default. So, you need to login to the system and change the meter type to “Three Phase”.

Click "Meters" on the left menu bar and then click “Edit” button on tab page to change “Single Phase” to “Three Phase”.



3.4 View the data

You can view the online data chart and historical report on Iammeter portal.



The **Table View** displays the following data for various meters:

Meter ID	Voltage	Current	Power	Energy	To Grid
Beijing: My Meter (C609240C)	229.9 V	0.32 A	33 W	102.52 kWh	0 kWh
Shanghai: My Meter (274cac10)	237.82 V	7.37 A	1786 W	1.63 kWh	0.19 kWh
Nanjing: 307 (81B030FD)	232.34 V	0.81 A	14 W	1830.88 kWh	22.22 kWh
Dalian: My Meter (60a36183)	242.69 V	4.66 A	1019 W	288.74 kWh	10.75 kWh
Hangzhou: meter (BF2E8618)	222.04 V	6.23 A	1 W	167.72 kWh	2.73 kWh
Guangzhou: My Meter (93ee86cd)	V	A	W	kWh	kWh
Tianjing: My Meter (a5b753a1)	236.79 V	0 A	0 W	1.26 kWh	0 kWh



4. Mobile App

Scan the QRcode to dowload Android/IOS app or search "iammeter" in Google Play or Apple Store.



View your data by mobile app

